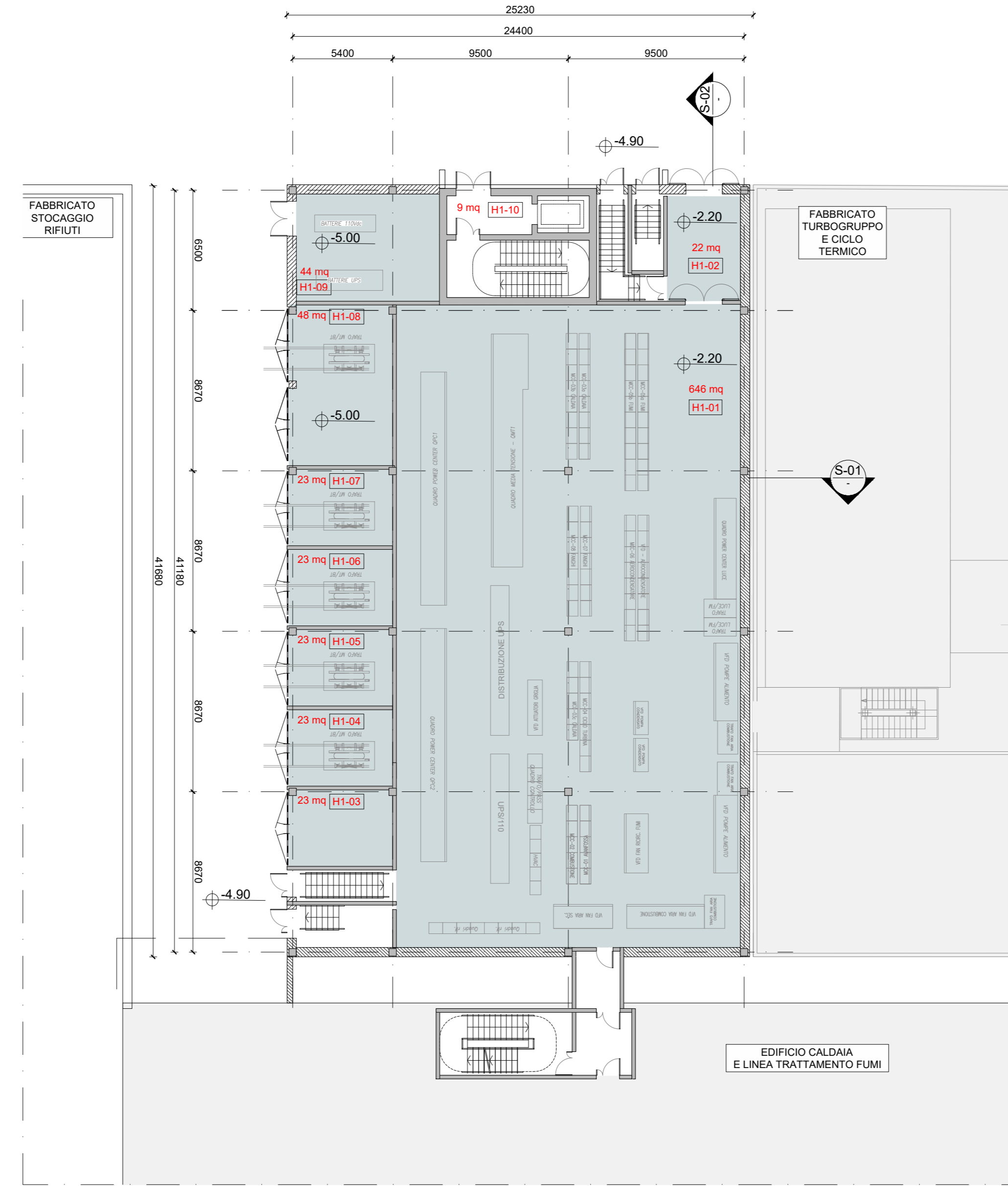
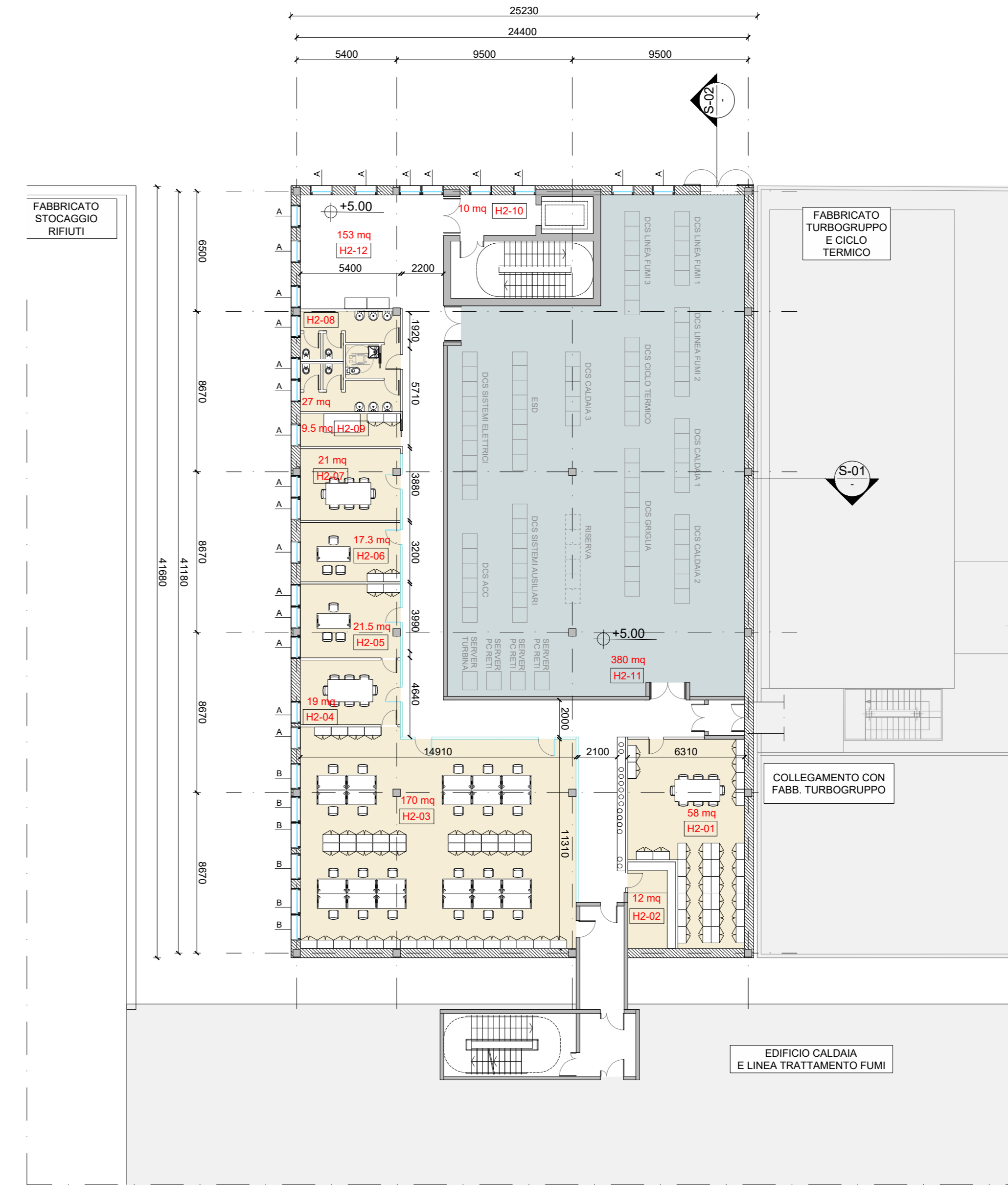


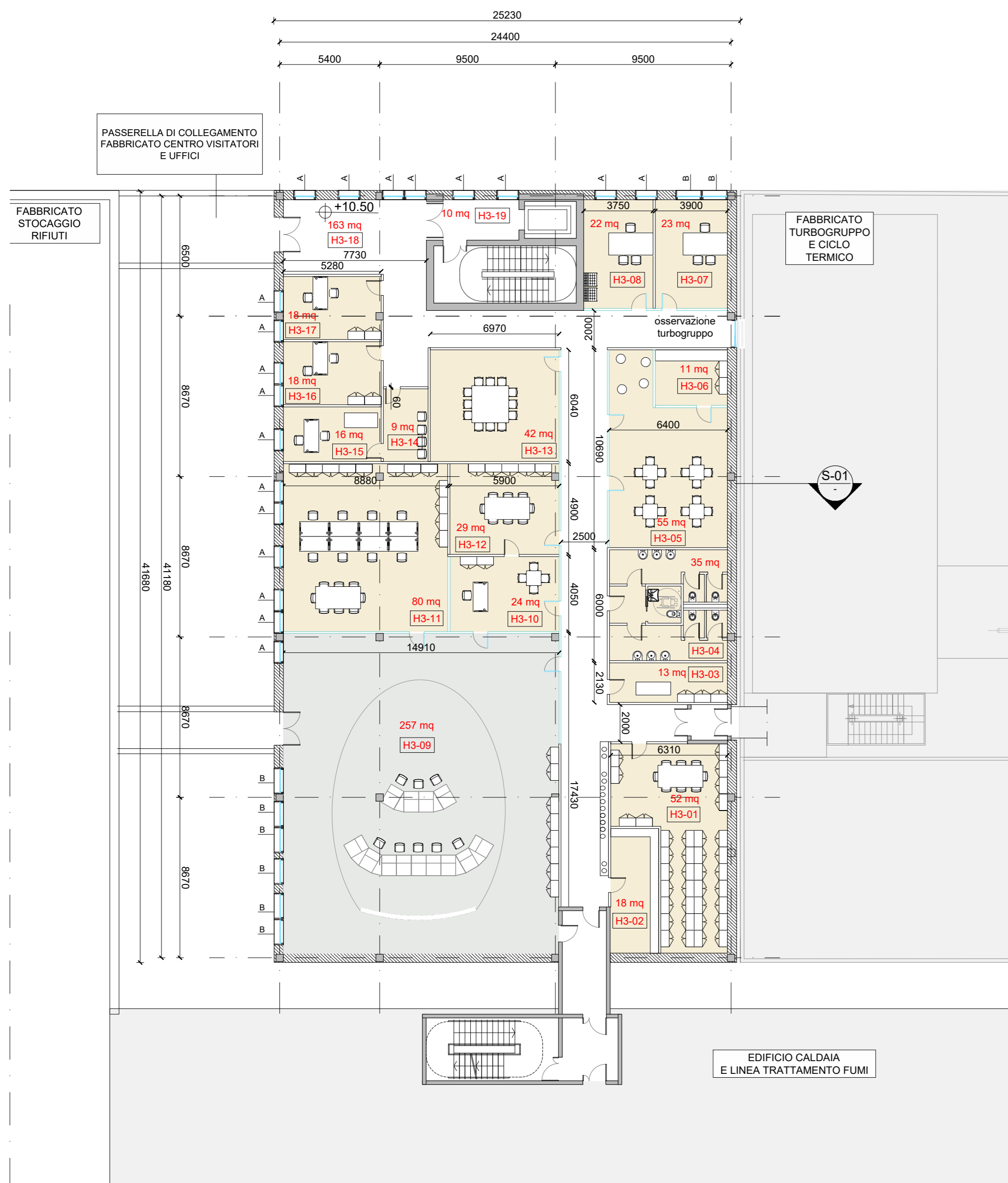
Pianta Livello -6.00
Scala 1:200



Pianta Livello -2.20
Scala 1:200



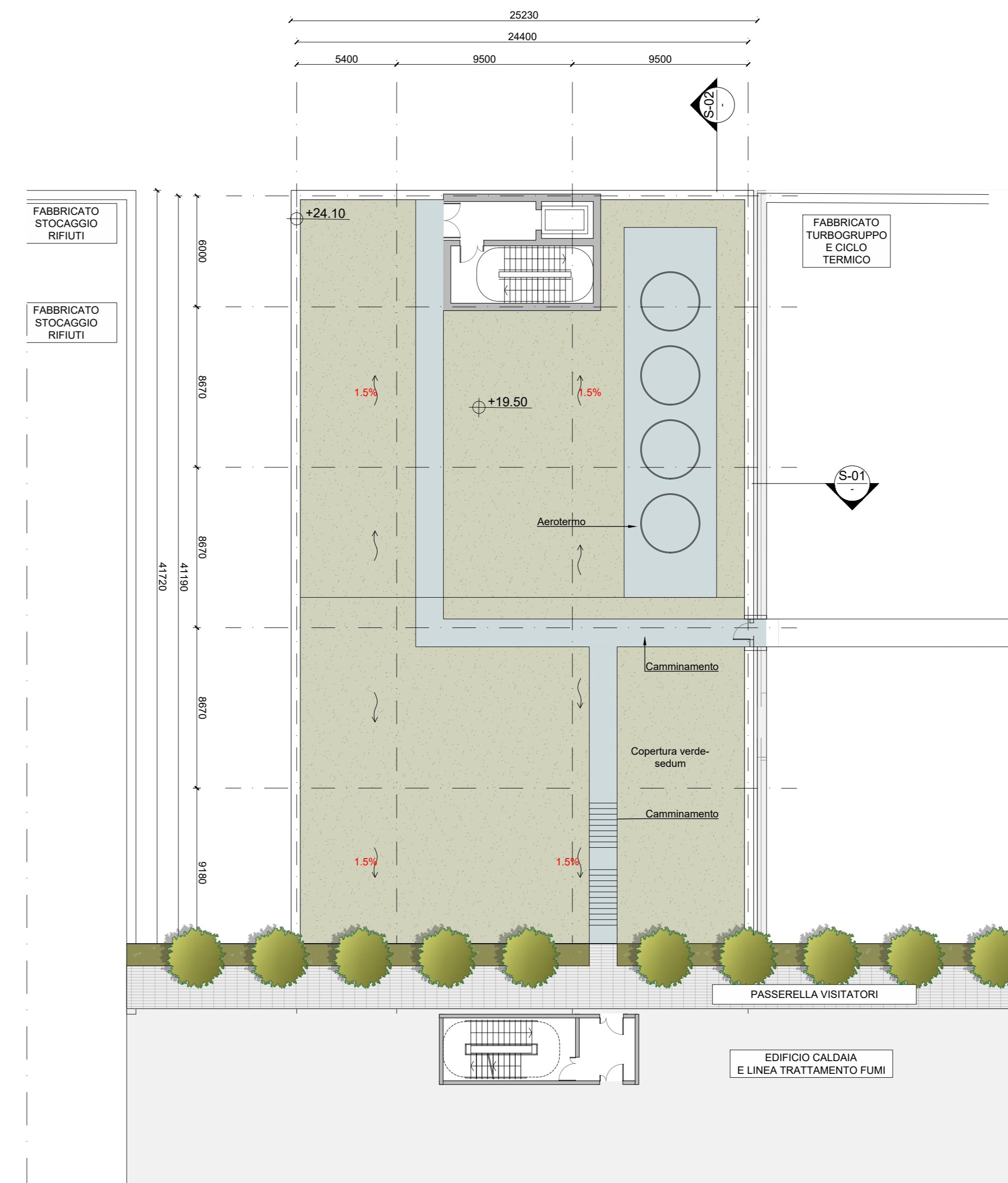
Pianta Livello +5.00
Scala 1:200



Pianta Livello +10.50
Scala 1:200

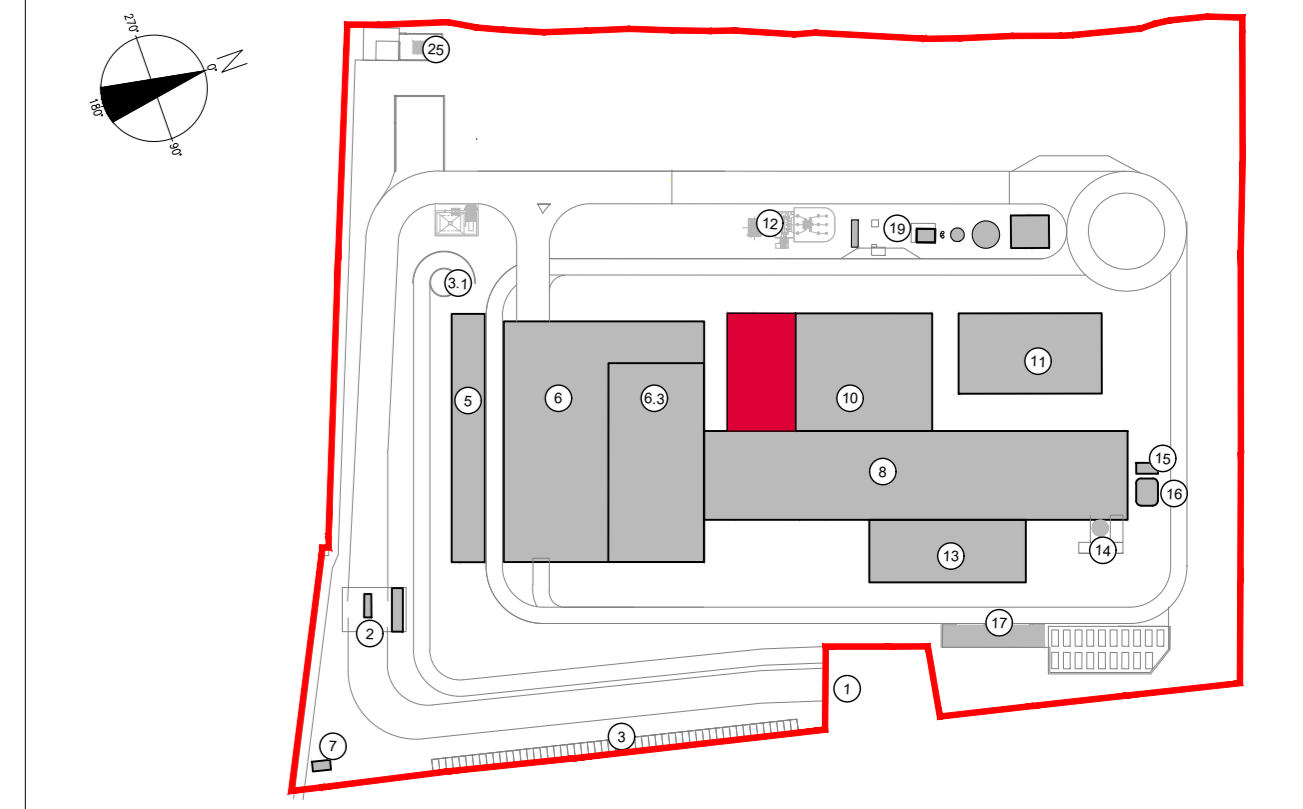


Pianta Livello +16.00
Scala 1:200



Pianta Livello Copertura
Scala 1:200

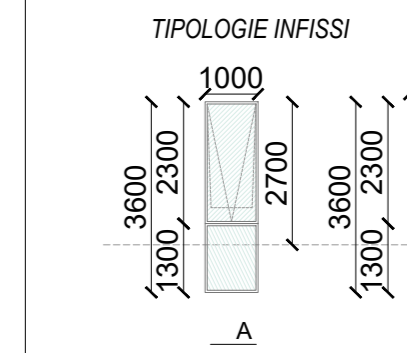
KEYPLAN



- CONVENZIONI GRAFICHE
- area tecnica
 - sala di controllo
 - uffici e servizi

Quota altimetrica finto
Sezioni / Prospetti

X1-01 Codice locali Per calcolo superfici utili e rapporti aerodinamici dei locali far riferimento alla relazione generale



LOCALE	DESTINAZIONE	Superficie (mq)
HE 01	CANTIERO	132.00
Pianta Livello -2.20		
HE 01	LABORATORIO	12.00
HE 02	LABORATORIO	12.00
HE 03	LABORATORIO	12.00
HE 04	LABORATORIO	12.00
HE 05	LABORATORIO	12.00
HE 06	LABORATORIO	12.00
HE 07	LABORATORIO	12.00
HE 08	LABORATORIO	12.00
HE 09	LABORATORIO	12.00
HE 10	LABORATORIO	12.00
HE 11	LABORATORIO	12.00
HE 12	LABORATORIO	12.00
HE 13	LABORATORIO	12.00
HE 14	LABORATORIO	12.00
HE 15	LABORATORIO	12.00
HE 16	LABORATORIO	12.00
HE 17	LABORATORIO	12.00
HE 18	LABORATORIO	12.00
HE 19	LABORATORIO	12.00
HE 20	LABORATORIO	12.00
HE 21	LABORATORIO	12.00
HE 22	LABORATORIO	12.00
HE 23	LABORATORIO	12.00
HE 24	LABORATORIO	12.00
HE 25	LABORATORIO	12.00
HE 26	LABORATORIO	12.00
HE 27	LABORATORIO	12.00
HE 28	LABORATORIO	12.00
HE 29	LABORATORIO	12.00
HE 30	LABORATORIO	12.00
HE 31	LABORATORIO	12.00
HE 32	LABORATORIO	12.00
HE 33	LABORATORIO	12.00
HE 34	LABORATORIO	12.00
HE 35	LABORATORIO	12.00
HE 36	LABORATORIO	12.00
HE 37	LABORATORIO	12.00
HE 38	LABORATORIO	12.00
HE 39	LABORATORIO	12.00
HE 40	LABORATORIO	12.00
HE 41	LABORATORIO	12.00
HE 42	LABORATORIO	12.00
HE 43	LABORATORIO	12.00
HE 44	LABORATORIO	12.00
HE 45	LABORATORIO	12.00
HE 46	LABORATORIO	12.00
HE 47	LABORATORIO	12.00
HE 48	LABORATORIO	12.00
HE 49	LABORATORIO	12.00
HE 50	LABORATORIO	12.00
HE 51	LABORATORIO	12.00
HE 52	LABORATORIO	12.00
HE 53	LABORATORIO	12.00
HE 54	LABORATORIO	12.00
HE 55	LABORATORIO	12.00
HE 56	LABORATORIO	12.00
HE 57	LABORATORIO	12.00
HE 58	LABORATORIO	12.00
HE 59	LABORATORIO	12.00
HE 60	LABORATORIO	12.00
HE 61	LABORATORIO	12.00
HE 62	LABORATORIO	12.00
HE 63	LABORATORIO	12.00
HE 64	LABORATORIO	12.00
HE 65	LABORATORIO	12.00
HE 66	LABORATORIO	12.00
HE 67	LABORATORIO	12.00
HE 68	LABORATORIO	12.00
HE 69	LABORATORIO	12.00
HE 70	LABORATORIO	12.00
HE 71	LABORATORIO	12.00
HE 72	LABORATORIO	12.00
HE 73	LABORATORIO	12.00
HE 74	LABORATORIO	12.00
HE 75	LABORATORIO	12.00
HE 76	LABORATORIO	12.00
HE 77	LABORATORIO	12.00
HE 78	LABORATORIO	12.00
HE 79	LABORATORIO	12.00
HE 80	LABORATORIO	12.00
HE 81	LABORATORIO	12.00
HE 82	LABORATORIO	12.00
HE 83	LABORATORIO	12.00
HE 84	LABORATORIO	12.00
HE 85	LABORATORIO	12.00
HE 86	LABORATORIO	12.00
HE 87	LABORATORIO	12.00
HE 88	LABORATORIO	12.00
HE 89	LABORATORIO	12.00
HE 90	LABORATORIO	12.00
HE 91	LABORATORIO	12.00
HE 92	LABORATORIO	12.00
HE 93	LABORATORIO	12.00
HE 94	LABORATORIO	12.00
HE 95	LABORATORIO	12.00
HE 96	LABORATORIO	12.00
HE 97	LABORATORIO	12.00
HE 98	LABORATORIO	12.00
HE 99	LABORATORIO	12.00
HE 100	LABORATORIO	12.00
HE 101	LABORATORIO	12.00
HE 102	LABORATORIO	12.00
HE 103	LABORATORIO	12.00
HE 104	LABORATORIO	12.00
HE 105	LABORATORIO	12.00
HE 106	LABORATORIO	12.00
HE 107	LABORATORIO	12.00
HE 108	LABORATORIO	12.00
HE 109	LABORATORIO	12.00
HE 110	LABORATORIO	12.00
HE 111	LABORATORIO	12.00
HE 112	LABORATORIO	12.00
HE 113	LABORATORIO	12.00
HE 114	LABORATORIO	12.00
HE 115	LABORATORIO	12.00
HE 116	LABORATORIO	12.00
HE 117	LABORATORIO	12.00
HE 118	LABORATORIO	12.00
HE 119	LABORATORIO	12.00
HE 120	LABORATORIO	12.00
HE 121	LABORATORIO	12.00
HE 122	LABORATORIO	12.00
HE 123	LABORATORIO	12.00
HE 124	LABORATORIO	12.00
HE 125	LABORATORIO	12.00
HE 126	LABORATORIO	12.00
HE 127	LABORATORIO	12.00
HE 128	LABORATORIO	12.00
HE 129	LABORATORIO	12.00
HE 130	LABORATORIO	12.00
HE 131	LABORATORIO	12.00
HE 132	LABORATORIO	12.00
HE 133	LABORATORIO	12.00
HE 134	LABORATORIO	12.00
HE 135	LABORATORIO	12.00
HE 136	LABORATORIO	12.00
HE 137	LABORATORIO	12.00
HE 138	LABORATORIO	12.00
HE 139	LABORATORIO	12.00
HE 140	LABORATORIO	12.00
HE 141	LABORATORIO	12.00
HE 142	LABORATORIO	12.00
HE 143	LABORATORIO	12.00
HE 144	LABORATORIO	12.00
HE 145	LABORATORIO	12.00
HE 146	LABORATORIO	12.00
HE 147	LABORATORIO	12.00
HE 148	LABORATORIO	12.00
HE 149	LABORATORIO	12.00
HE 150	LABORATORIO	12.00
HE 151	LABORATORIO	12.00
HE 152	LABORATORIO	12.00
HE 153	LABORATORIO	12.00
HE 154	LABORATORIO	12.00
HE 155	LABORATORIO	12.00
HE 156	LABORATORIO	12.00
HE 157	LABORATORIO	12.00
HE 158	LABORATORIO	12.00
HE 159	LABORATORIO	12.00
HE 160	LABORATORIO	12.00
HE 161	LABORATORIO	12.00
HE 162	LABORATORIO	12.00
HE 163	LABORATORIO	12.00
HE 164	LABORATORIO	12.00
HE 165	LABORATORIO	12.00
HE 166	LABORATORIO	12.00
HE 167	LABORATORIO	12.00
HE 168	LABORATORIO	12.00
HE 169	LABORATORIO	12.00
HE 170	LABORATORIO	12.00
HE 171	LABORATORIO	12.00
HE 172	LABORATORIO	12.00
HE 173	LABORATORIO	12.00
HE 174	LABORATORIO	12.00
HE 175	LABORATORIO	12.00
HE 176	LABORATORIO	12.00
HE 177	LABORATORIO	12.00
HE 178	LABORATORIO	12.00
HE 179	LABORATORIO	12.00
HE 180	LABORATORIO	12.00
HE 181	LABORATORIO	12.00
HE 182	LABORATORIO	12.00
HE 183	LABORATORIO	12.00
HE 184	LABORATORIO	12.00
HE 185	LABORATORIO	12.00
HE 186	LABORATORIO	12.00
HE 187	LABORATORIO	12.00
HE 188	LABORATORIO	12.00
HE 189	LABORATORIO	12.00
HE 190	LABORATORIO	12.00
HE 191	LABORATORIO	12.00
HE 192	LABORATORIO	12.00
HE 193	LABORATORIO	12.00
HE 194	LABORATORIO	12.00
HE 195	LABORATORIO	12.00
HE 196	LABORATORIO	12.00
HE 197	LABORATORIO	12.00
HE 198	LABORATORIO	12.00
HE 199	LABORATORIO	12.00
HE 200	LABORATORIO	12.00

NOTE:
 - Le quote di livello sono relative alla q.t.a. di progetto, corrispondente a +225.80 m s.l.m.
 - Le misure sono espresse in millimetri tranne ove diversamente indicato.
 - Nella fase di progettazione esecutiva, tutte le misure indicate saranno da verificare in sito.
 - In caso di divergenza fra differenti elaborati di progetto, prevalgono sempre i disegni di maggiore dettaglio.
 N.B. Il layout delle componenti tecnologiche interne è puramente indicativo.

Revisione	Data	Descrizione revisione	Redazione
00	Novembre 2022	Prima emissione	crew

Numero documento interno: CAVP09E1000CDN0800101
 Derivato da: -
 Committente / Client: -
 Titolo progetto: Impianto per la produzione di energia elettrica e termica mediante combustione di rifiuti speciali non pericolosi sito in Comune di Cavaglià (BI)

Titolo documento: Edificio elettrico e sala di controllo - Pianta
 Numero Tavola: Tav.32
 Scala: 1:200
 Scala piottaggio: 1:1

Progettista: M. Mazzarella
 Verifica: -
 Proponente - Legale Rappresentante: F. Roncari
 Approvazione: C. Donati

Proponente: A2A Ambiente S.p.A.
 Ingegneria Ambiente
 Via Olgettina 25
 20132 Milano
 T [+39] 02 2729 81
 ingegneria.ambiente@a2a.eu
 www.a2ambiente.eu

È vietato coniare a terzi o riprodurre questo documento, utilizzare il contenuto o renderlo comunque noto a terzi senza autorizzazione. Ogni infrazione comporta il risarcimento dei danni subiti. Sono riservati tutti i diritti derivanti dalla concessione di brevetti per invenzioni, di modelli industriali di utilità e di disegni o modelli. The reproduction, distribution and utilization of this document as well as the communication of its contents to others without express authorization is prohibited. Offenders will be held liable for the payment of damages. All rights reserved in the event of the grant of patent, utility models or design.