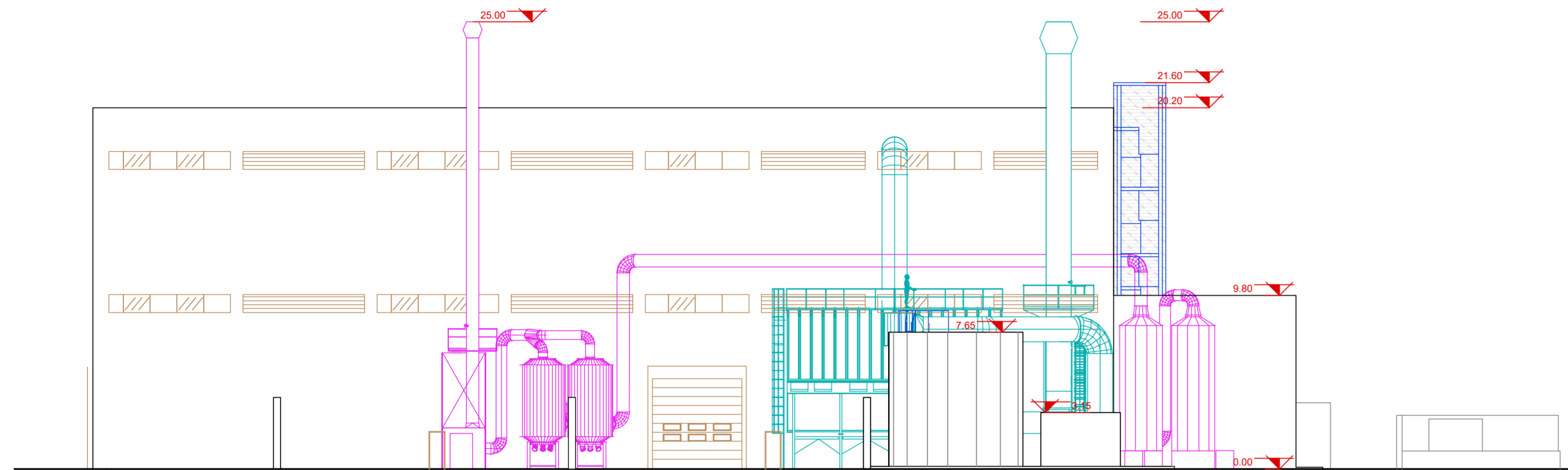
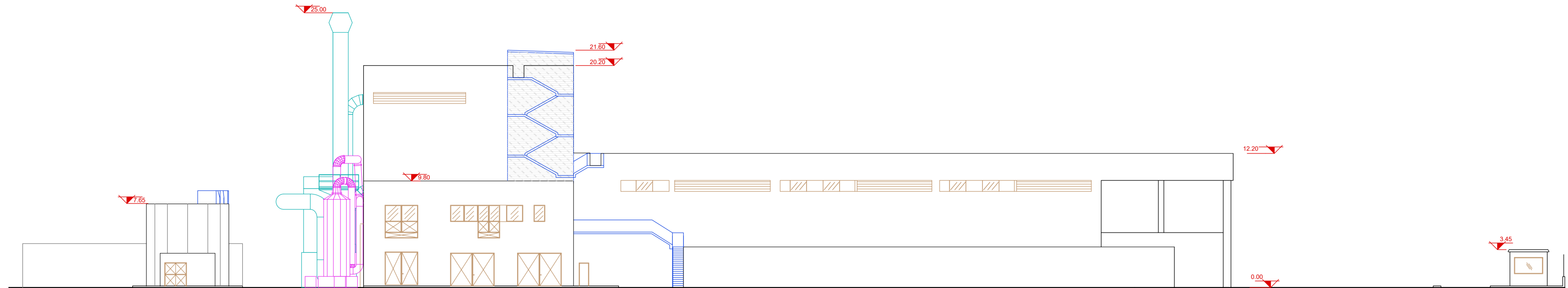


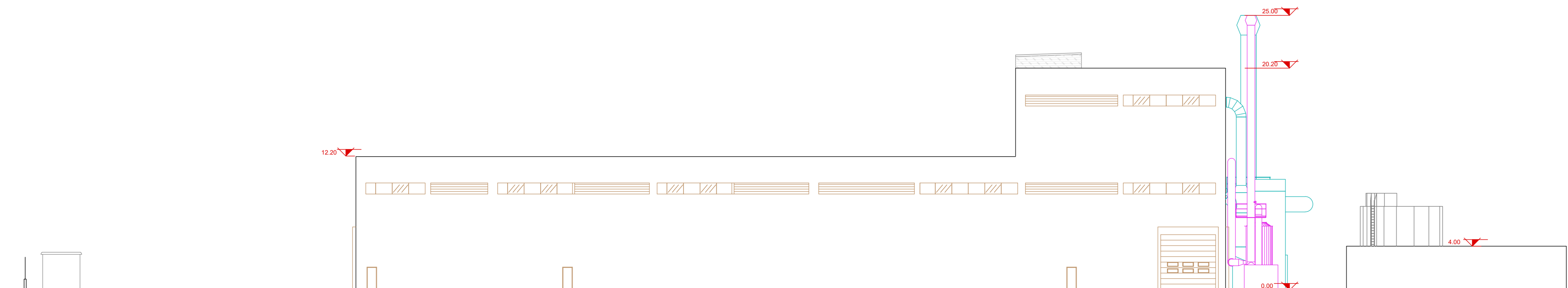
PROSPETTO NORD IMPIANTO



PROSPETTO SUD IMPIANTO

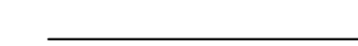



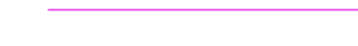



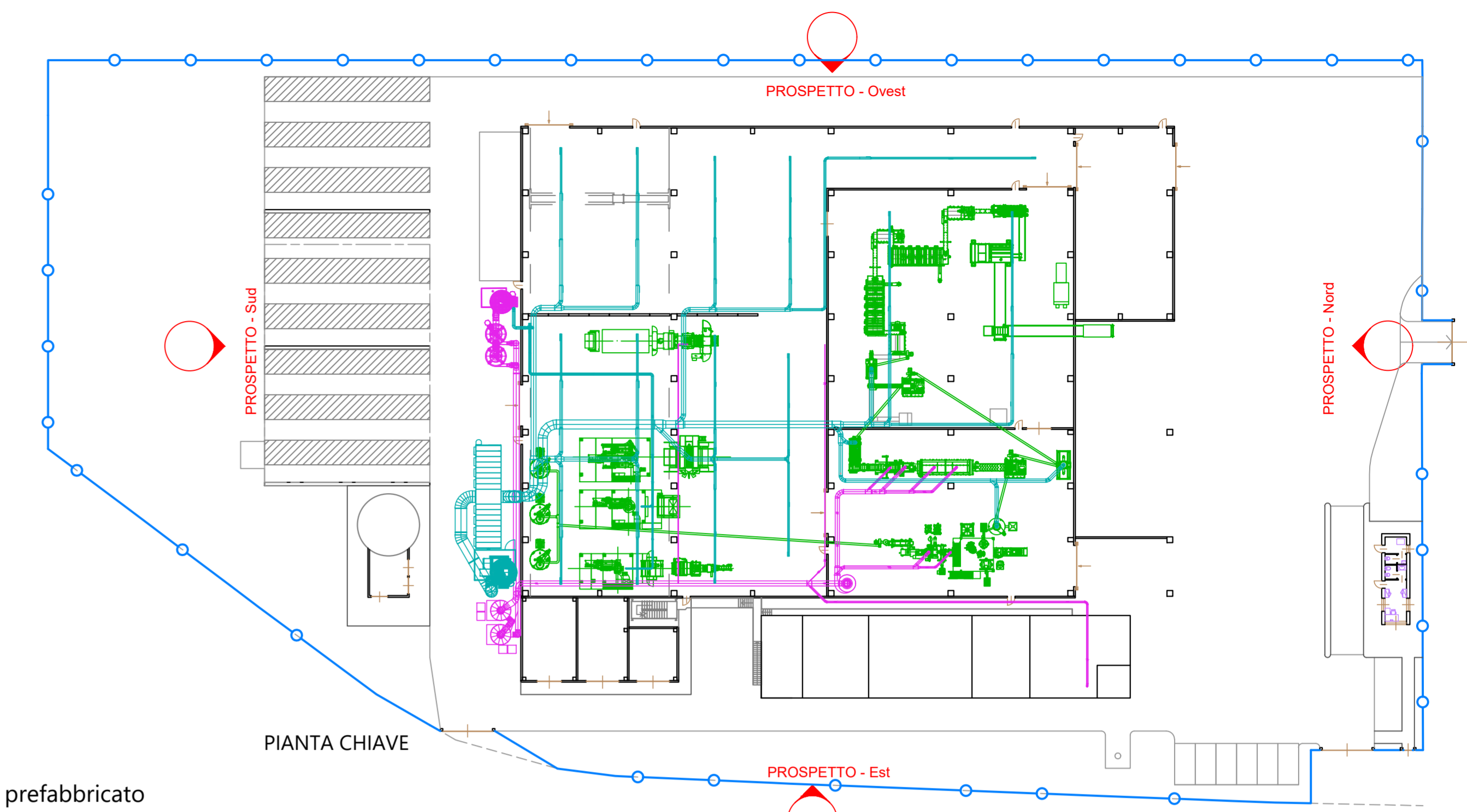
PROSPETTO EST IMPIANTO



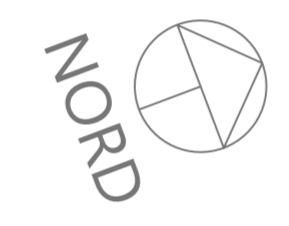
PROSPETTO OVEST IMPIANTO

LEGENDA MATERIALI

-  Struttura in c.a. prefabbricato
-  Struttura metallica
-  Portoni e serramenti
-  Macchine
-  Trattamento aria umida
-  Trattamento aria



PIANTA CHIAVE



N.B. LA QUOTA 0.00 DI PROGETTO CORRISPONDE ALLA QUOTA ASSOLUTA +218.60

00	AU	Ottobre 2022	Prima emissione	R. Mistarini	C. Tepordei	P. Agustoni
Revisione / Revision	Fase temp / Time phase	Data / Date	Descrizione revisione / Description	Redazione / Created by	Verifica / Check	Approvazione / Approval
Numero documento / Document number			Derivato da / Drawn by			
CAVA04-V01-F00-GN-00-000-A-C-004-R00			CAVA04-W1-A-C-004-R01			
Committente / Client			Titolo progetto / Project title			
			Centro impiantistico di Cavaglià, Loc. Gerbido, Cavaglià (BI) Istanza PAUR art.27-bis D.Lgs. 152/06 e s.m.i. Modifica polo tecnologico recupero e riciclo plastiche Nuovo impianto di riciclo materiali plastici produzione film e sacchetti			
A2A Ambiente S.p.A. Ingegneria Ambiente Via Olgettina 25 20132 Milano T [+39] 02 2729 81 ingegneria.ambiente@a2a.eu www.a2aambiente.eu			Titolo documento / Document title <b>IMPIANTO DI RICICLO MATERIALI PLASTICI E PRODUZIONE FILM E SACCHETTI</b>  Capannone di processo Prospetti			
Fornitore / Supplier			Numero tavola / Table number		Scala grafica / Graphic Scale	
			<b>T14</b>		1:200	
					Scala plottaggio / Plot Scale	
					1:1	
Progettista / Design engineer						