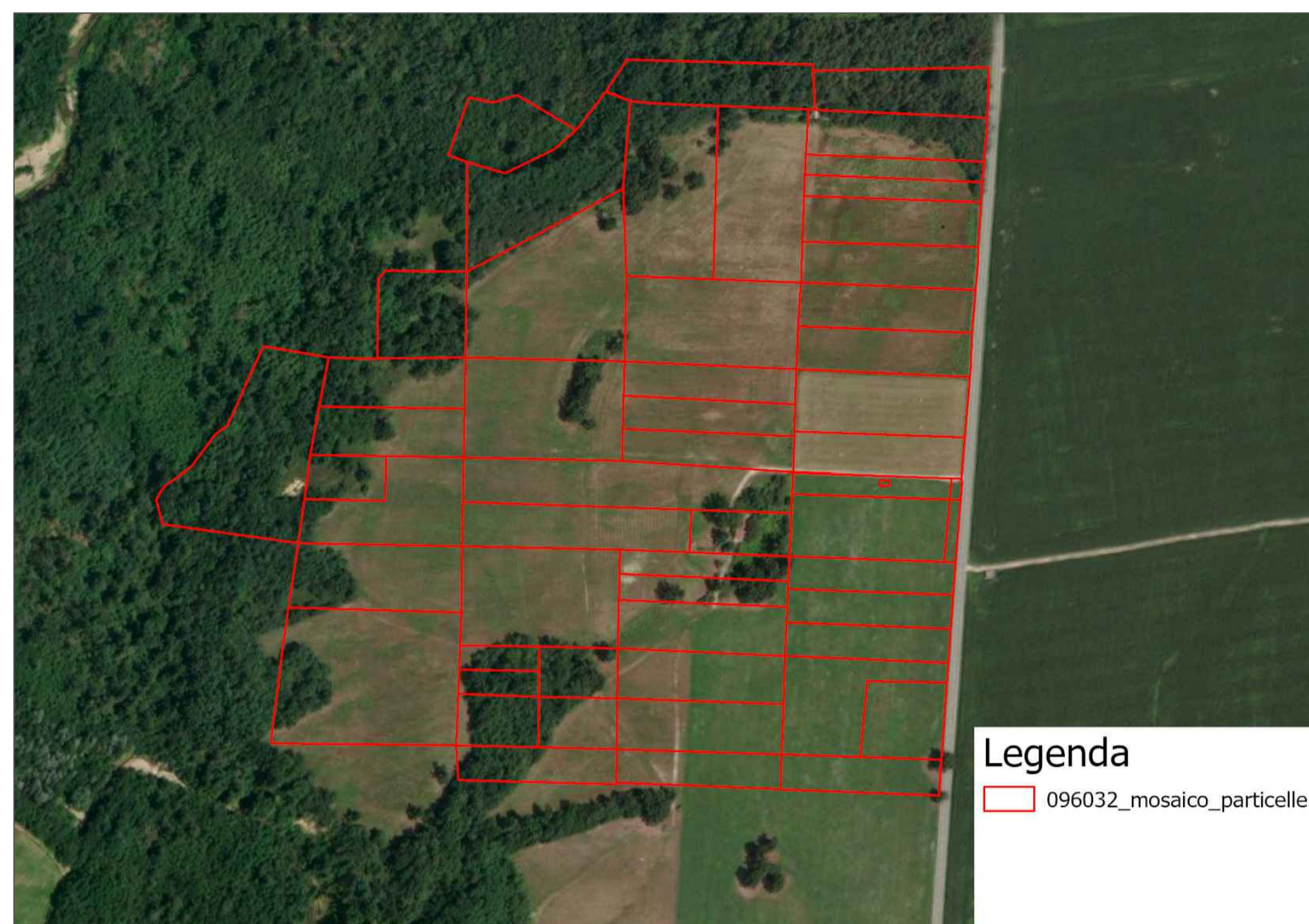
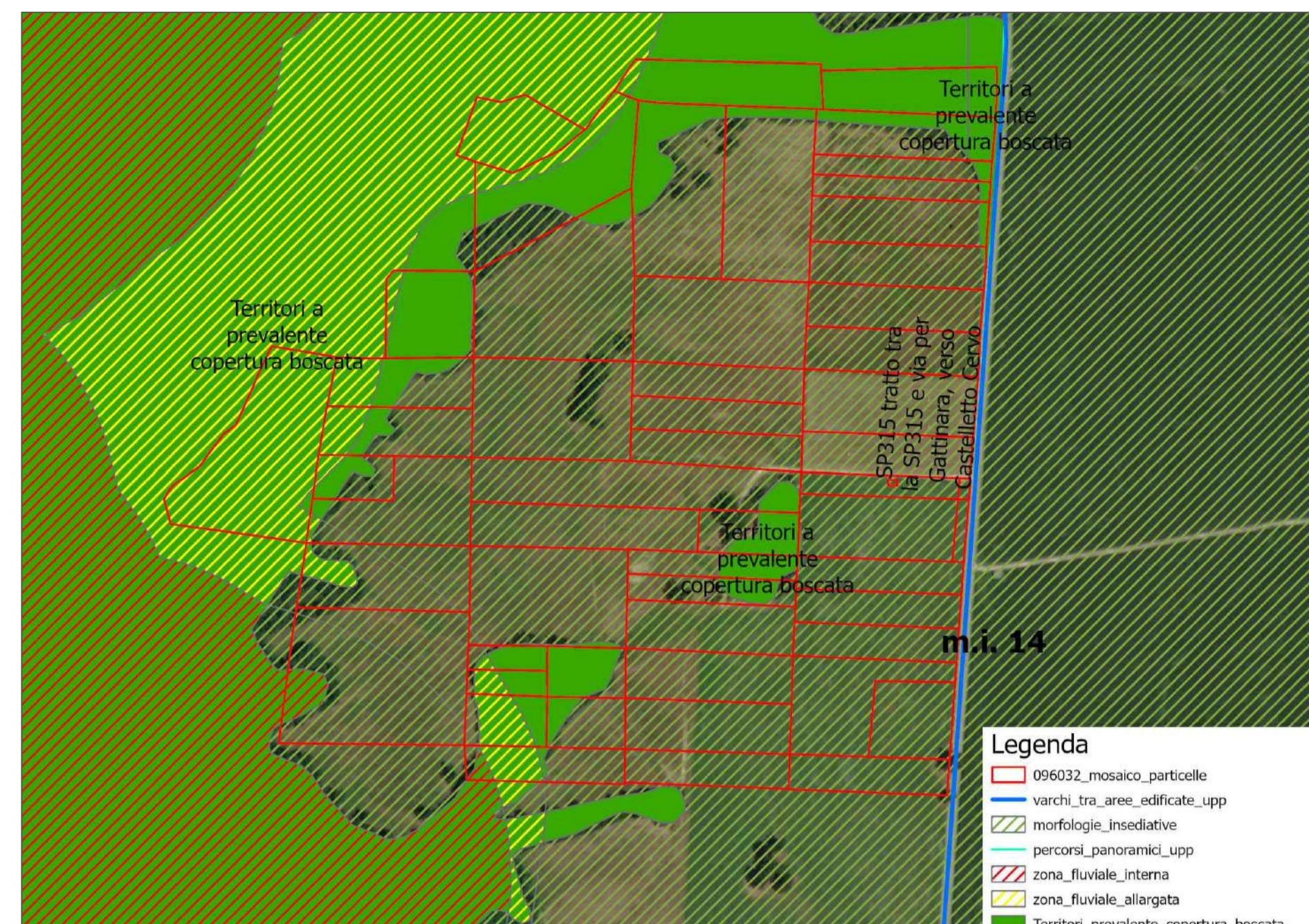


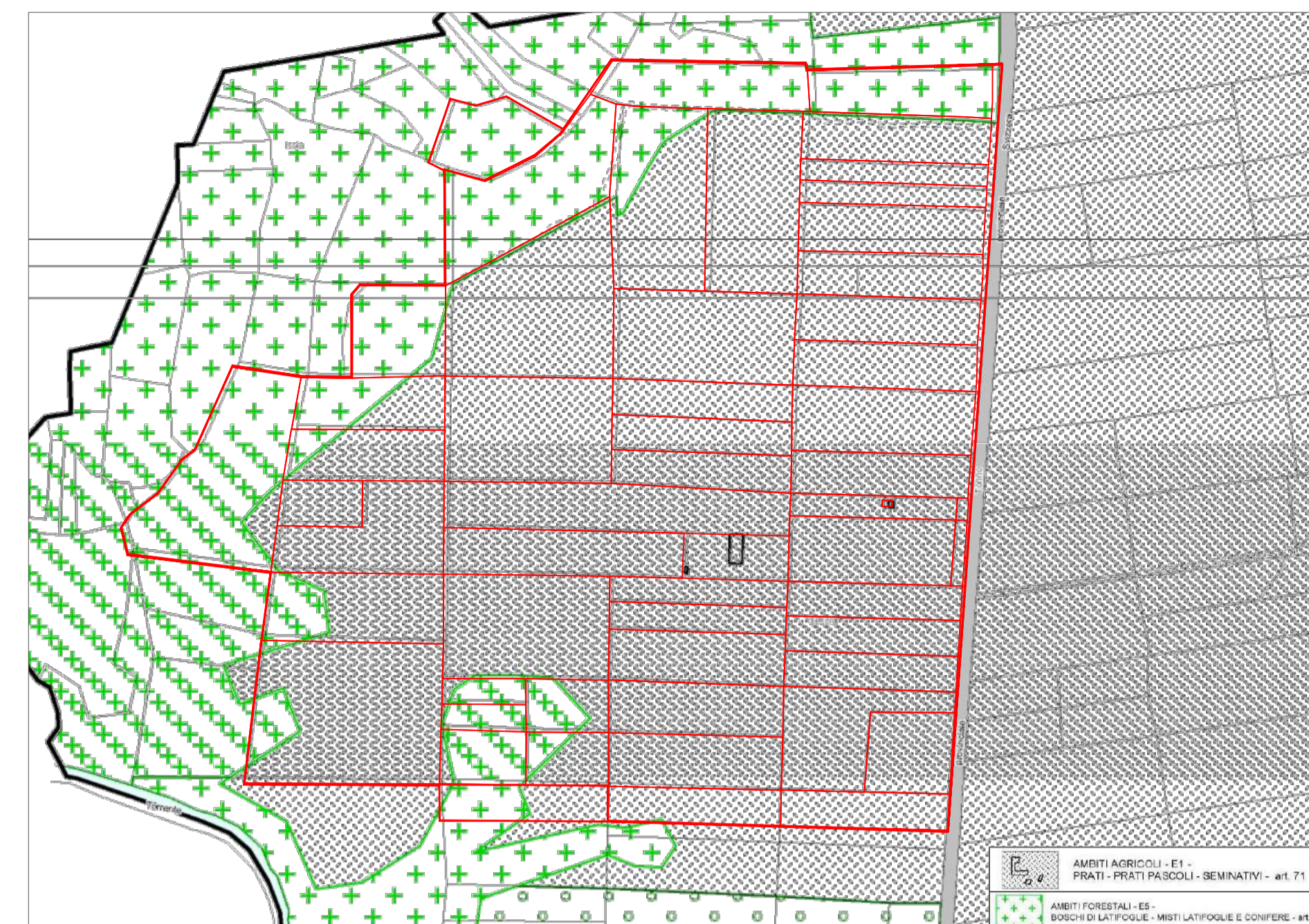
INQUADRAMENTO SU ORTOFOTO



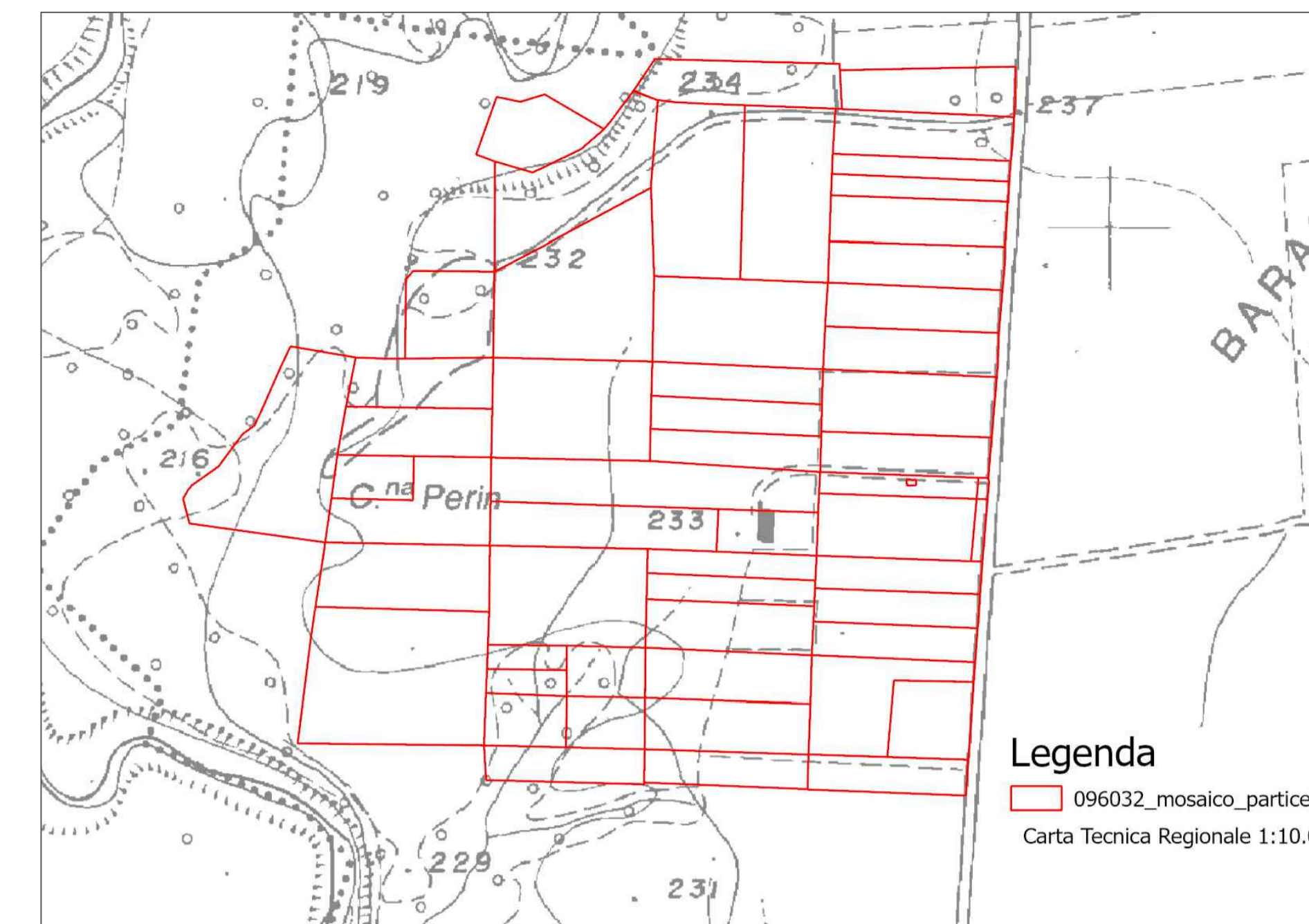
INQUADRAMENTO SU TAVOLA 4 PPR



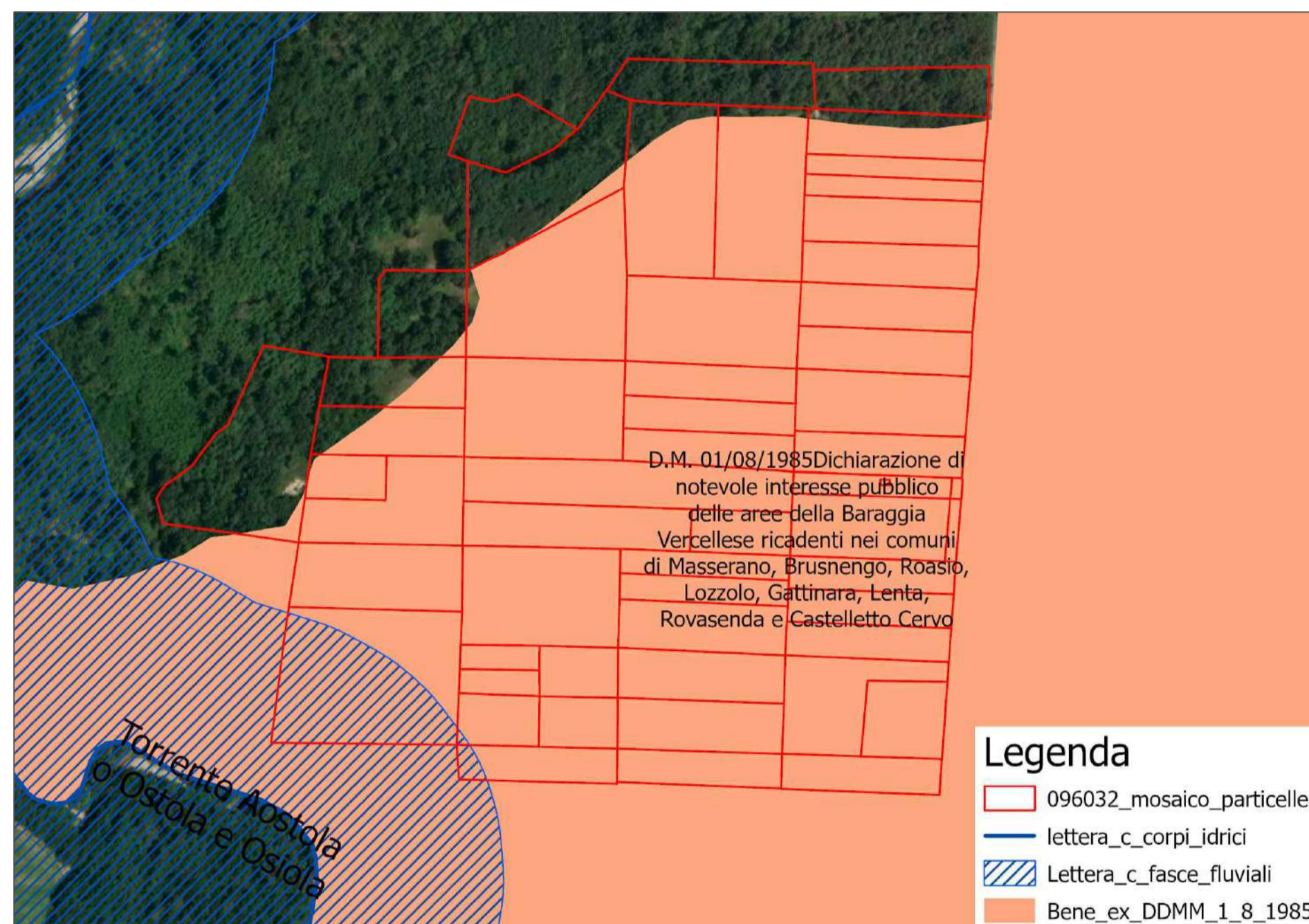
INQUADRAMENTO SU PRG TAVOLA PR1b



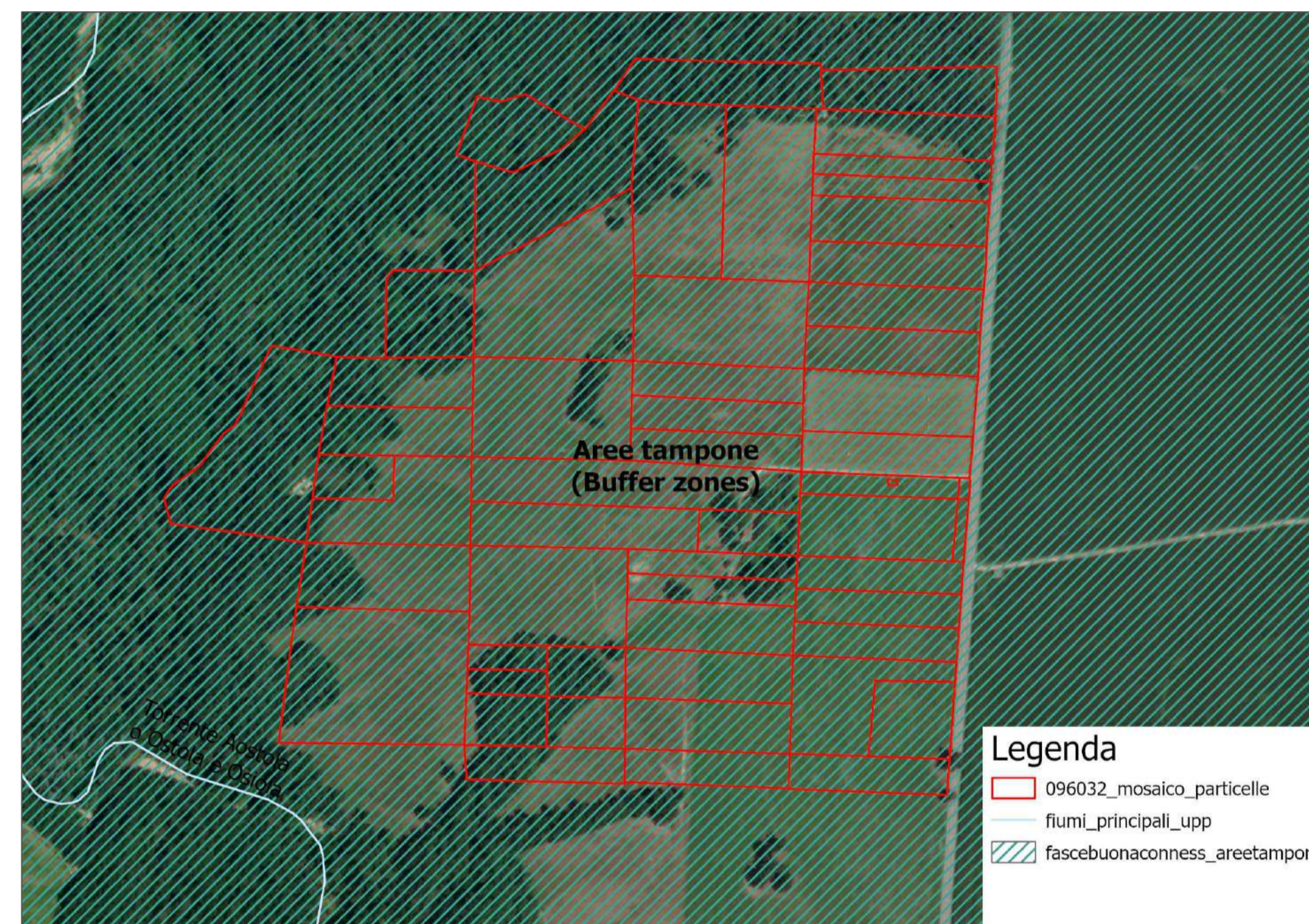
INQUADRAMENTO SU CTR



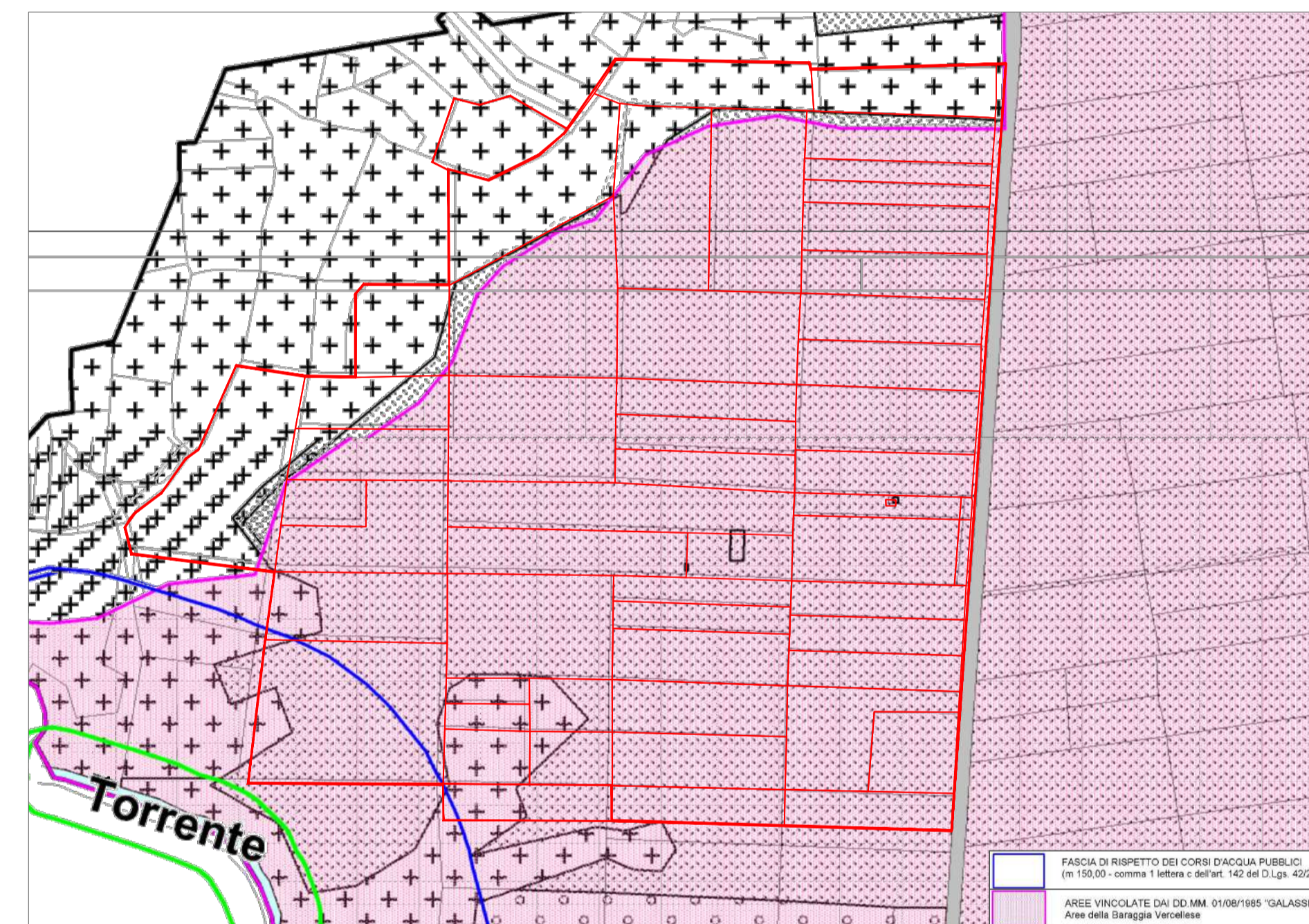
INQUADRAMENTO SU TAVOLA 2 PPR



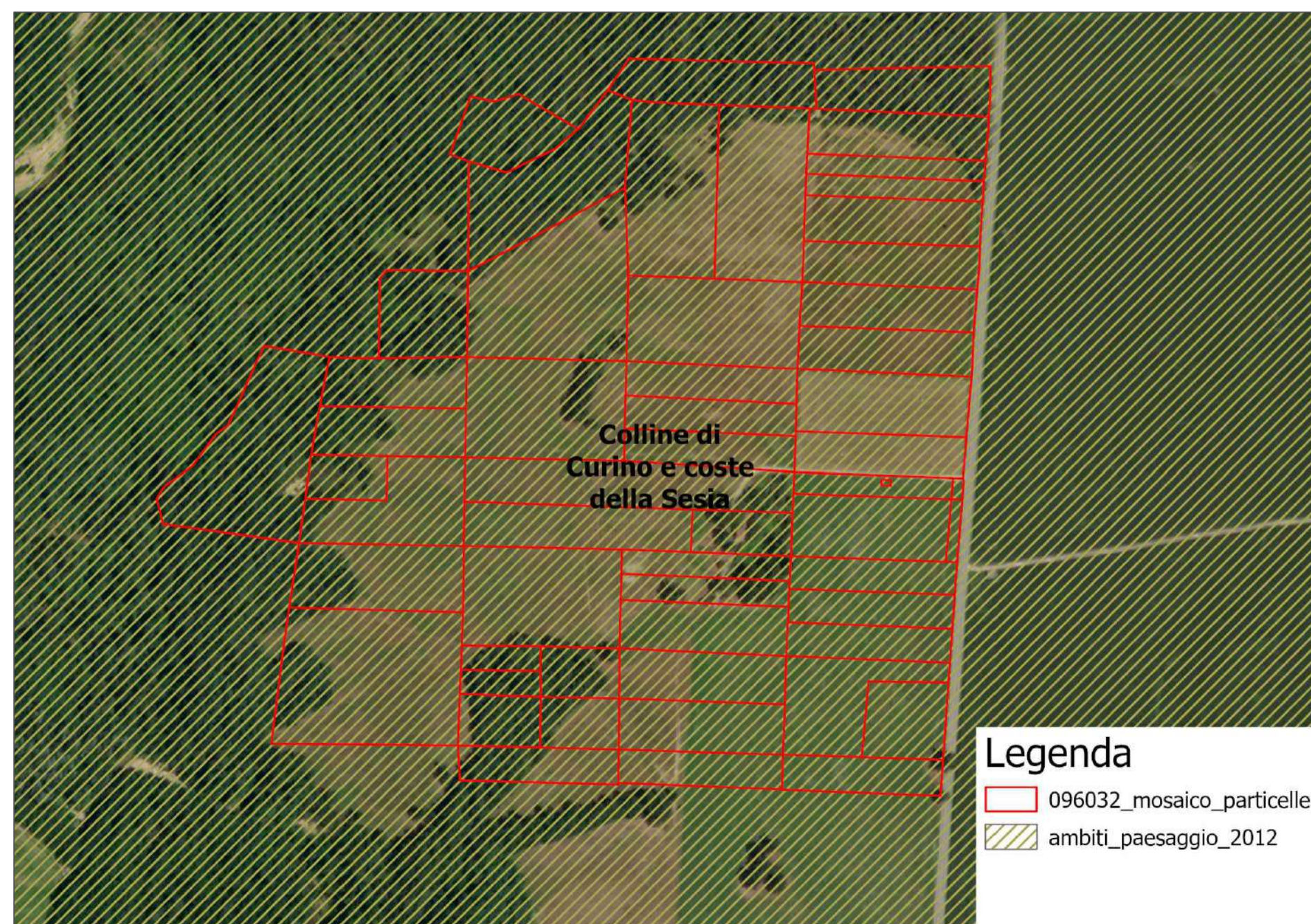
INQUADRAMENTO SU TAVOLA 5 PPR



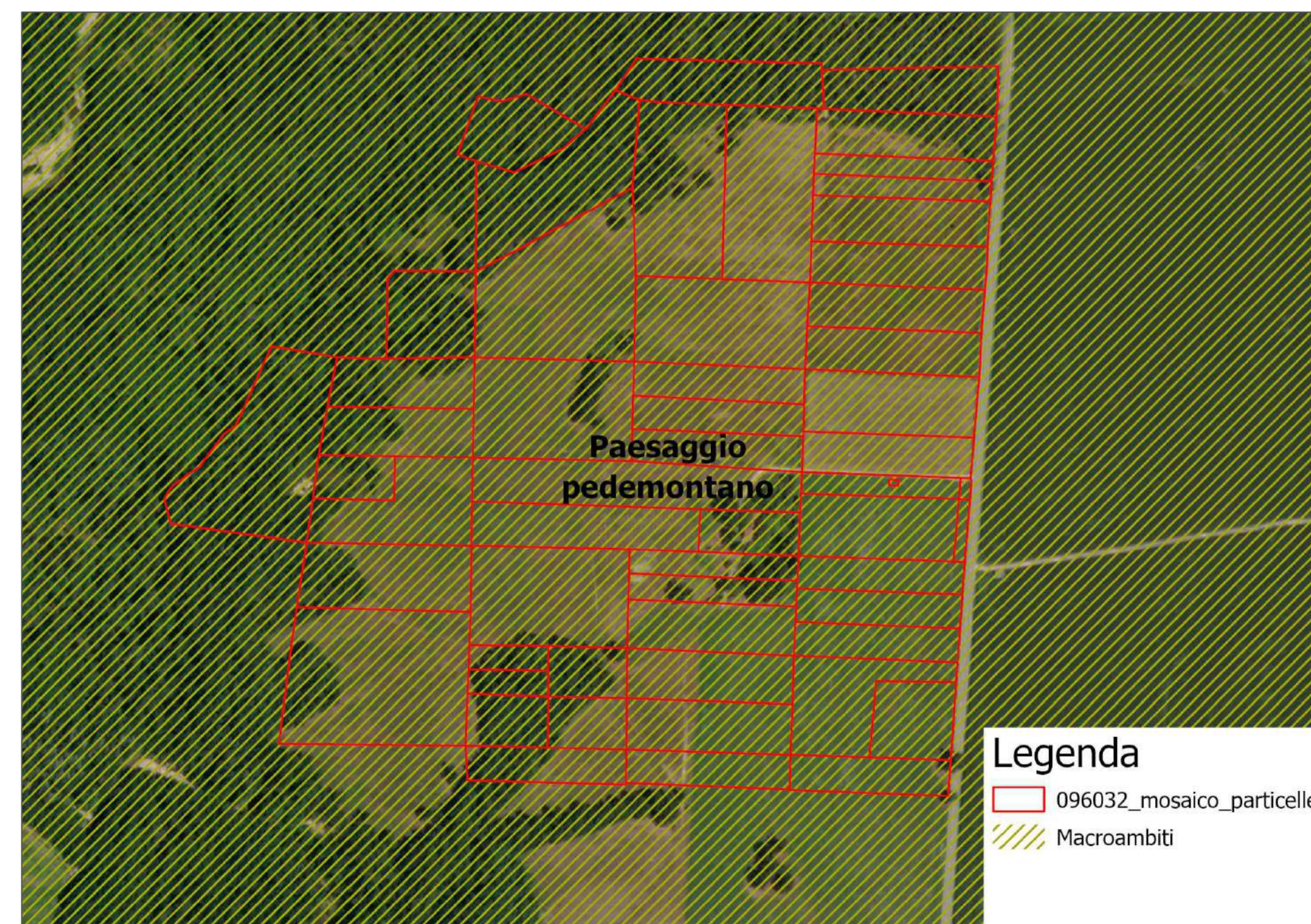
INQUADRAMENTO SU PRG TAVOLA PR3b



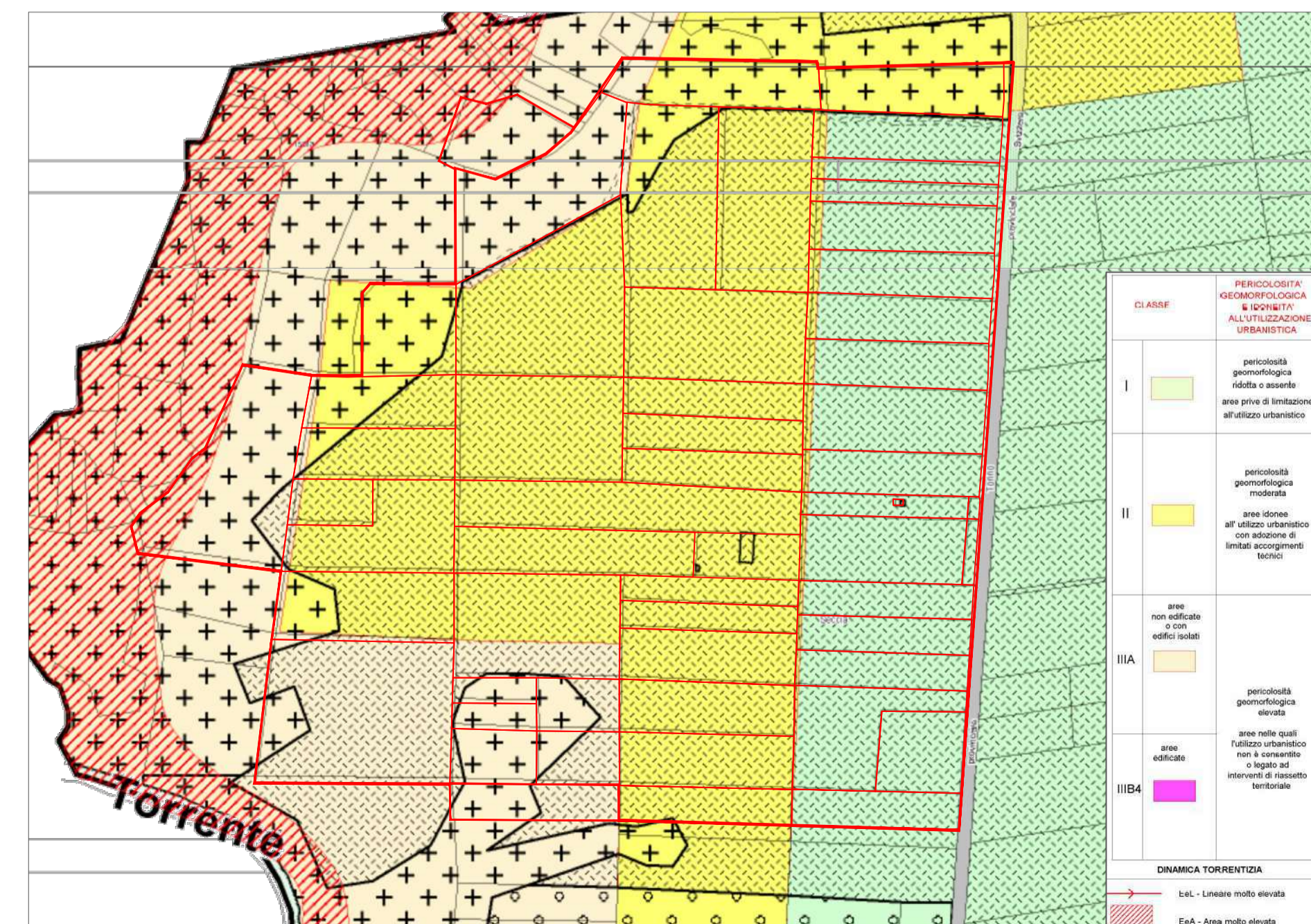
INQUADRAMENTO SU TAVOLA 3 PPR



INQUADRAMENTO SU TAVOLA 6 PPR



INQUADRAMENTO SU PRG TAVOLA PR2b



COMUNE DI MASSERANO



PROVINCIA DI BIELLA



IMPIANTO SOLARE AGRIVOLTAICO DA 9,99 MWp
Verifica di assoggettabilità a VIA ai sensi dell'art. 19 D.lgs. n. 152/2006

IMMOBILE	Comune di Masserano Foglio 64 Mappali: 4, 16, 20, 22, 30, 31, 32, 33, 34, 35, 36, 42, 43, 44, 45, 57, 58, 59, 60, 61, 62, 63, 64, 65, 66, 67, 68, 69, 73, 74, 75, 76, 77, 80, 81, 82, 83, 84, 85, 86, 87, 88, 89, 136, 137, 138, 139, 140, 141, 142, 143, 155, 165, 171, 172	
PROGETTO VERIFICA DI ASSOGGETTABILITÀ A VIA	OGGETTO TAV01 - INQUADRAMENTO	SCALA 1:4.000
REVISIONE - DATA REV.00 - 15/11/2023	VERIFICATO	APPROVATO
IL RICHIEDENTE	MODICA ENERGIA SRL FIRMA _____	
I PROGETTISTI	Ing. Riccardo Valz Grillo FIRMA _____ Arch. Andrea Zegna FIRMA _____	
TEAM DI PROGETTO	LAND LIVE srl - Società per l'Ingegneria 13900 Biella - Via Repubblica 41 Tel. +39 015 32838 - Fax +39 015 30878	

